



Rider Light 2025

**contact:
Lars Niegisch
larsniegisch1@gmail.com / mobile: +49 (0) 1573 0155110**



LIGHTING:

Contact: Lars Niegisch
01573/0155110
larsniegisch1@gmail.com

Front: 4x Martin Mac 600
4x Stairville LED Par
2x 1Kw Fresnel
6x Clay Paky Golden Scan 3
4x Futurelight MH 840
2x 4- Lite Blinder

Back: 6x R7 Beam Movinghead
4x Stairville Quad LED Wash
4x Stairville MH 100 Beam
8x Stairville CB 100 LED BEAM
2x Stairville Matrix Blinder 5x5
3x Par 36 ACL Group

Specials: 2x Unique Hazer
4x AF 180 LED Fogger CO2 FX Vertical Smoke

Stage/Floor: 4x R7 Beam Movinghead

FoH: JB LIGHTING LICON 1X
MA Lighting Grand MA full size

LN 21.6.21



Lighting Plot 1

Stage

Backtruss

ACL1

ACL1

ACL2

Truss3

Truss4

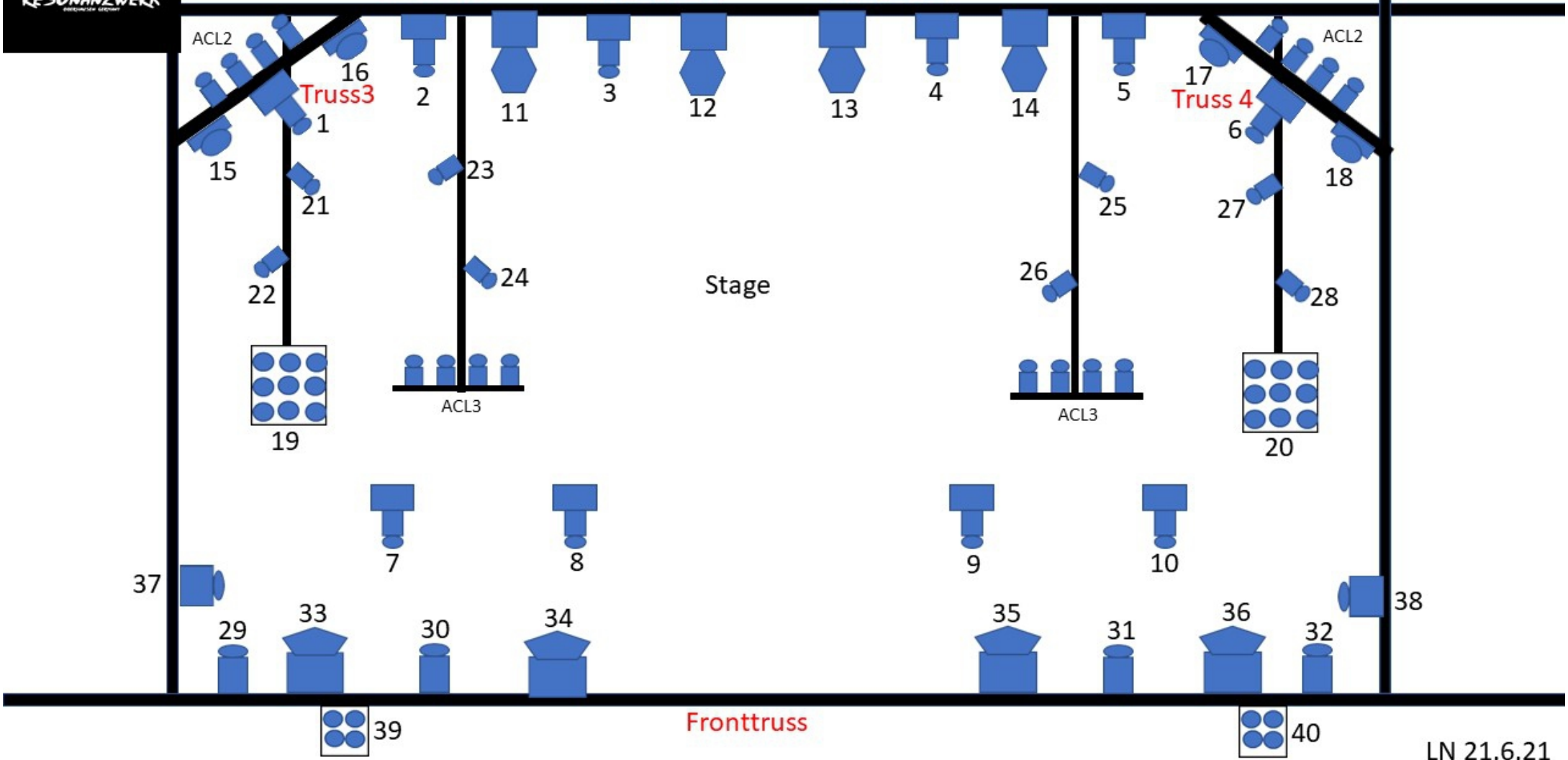
ACL2

Stage

ACL3

ACL3

Fronttruss



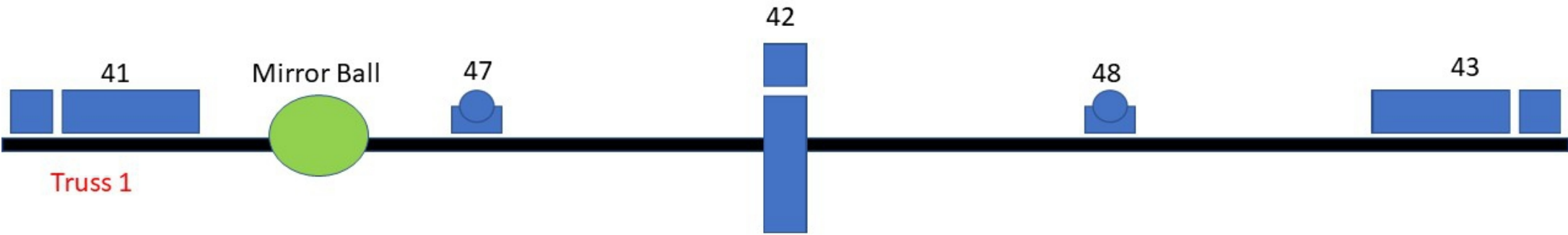
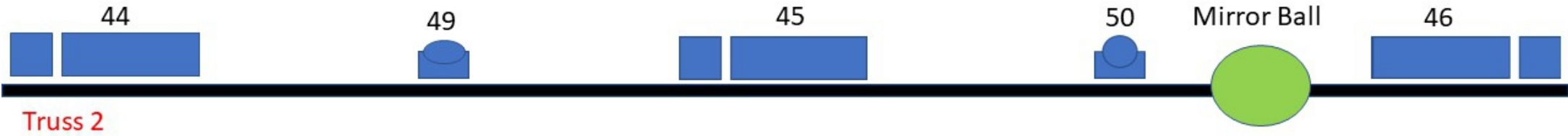
LN 21.6.21



Lighting Plot 2

Hall

Stage
↑



FoH
↓

LN 21.6.21



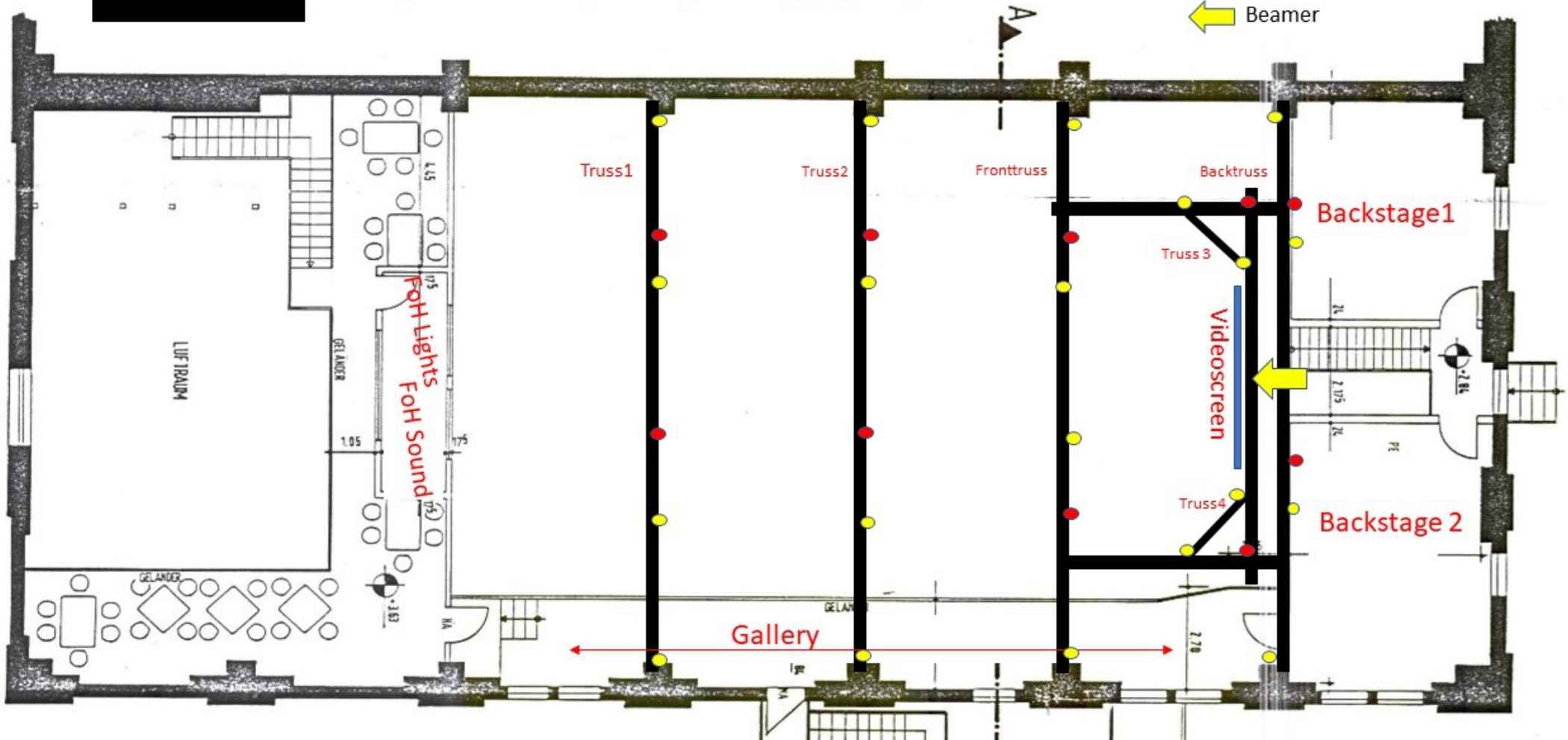
Location and Trussing First Floor

(all truss are full with permanent lights.see on lightingplot 1&2)

● Hangingpoint (steel)

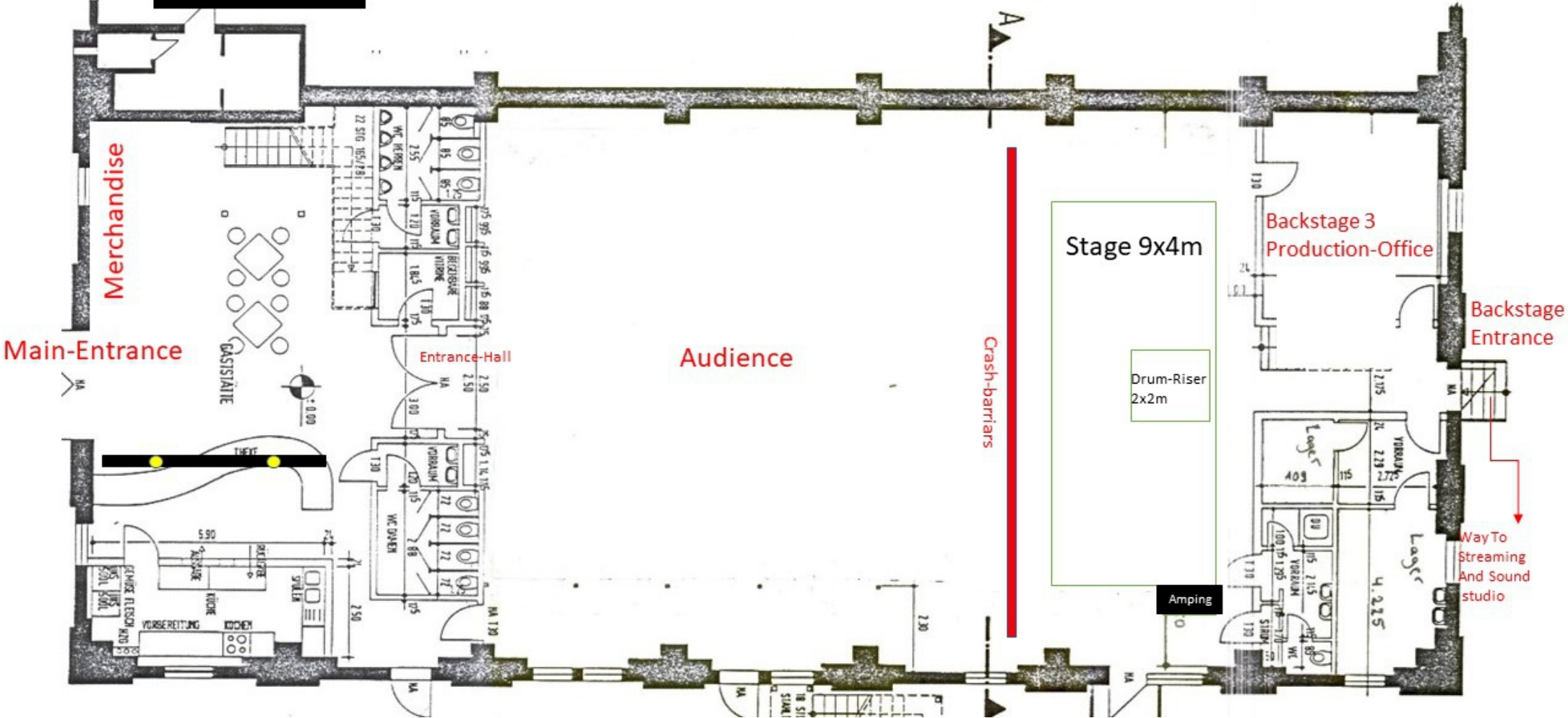
● Safetypoint (steel)

← Beamer



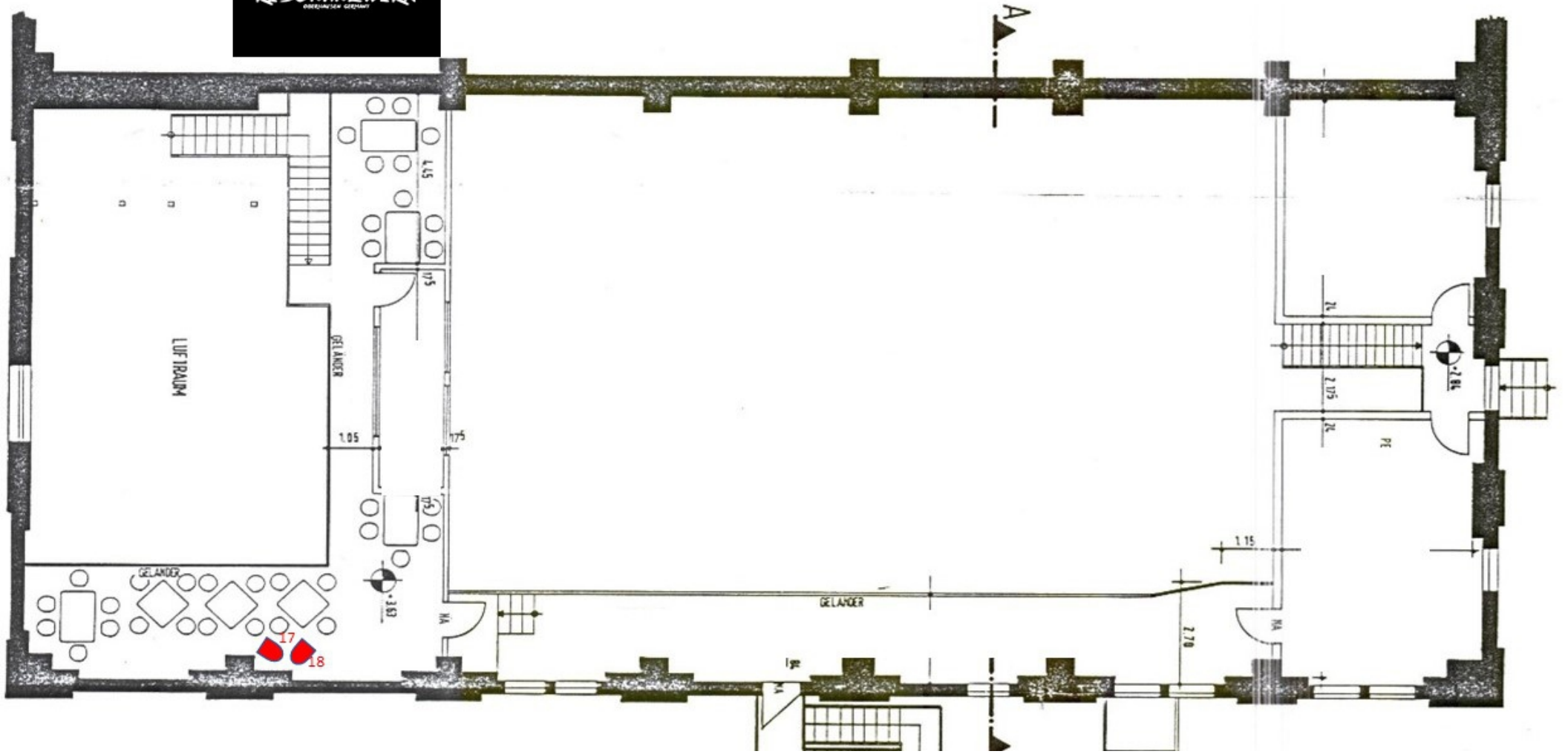


Location & Trussing Groundfloor



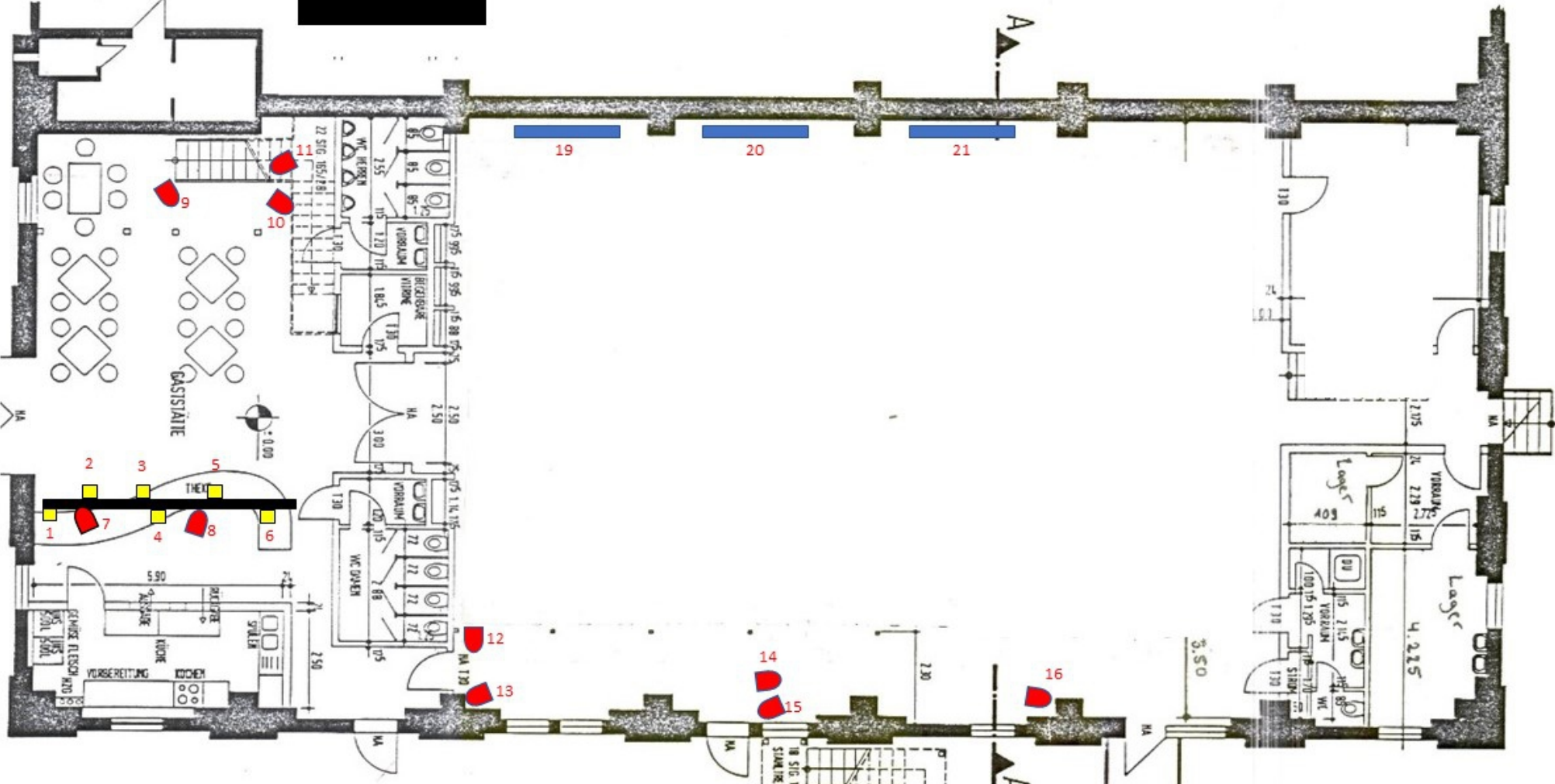


Deko-licht Obergeschoss





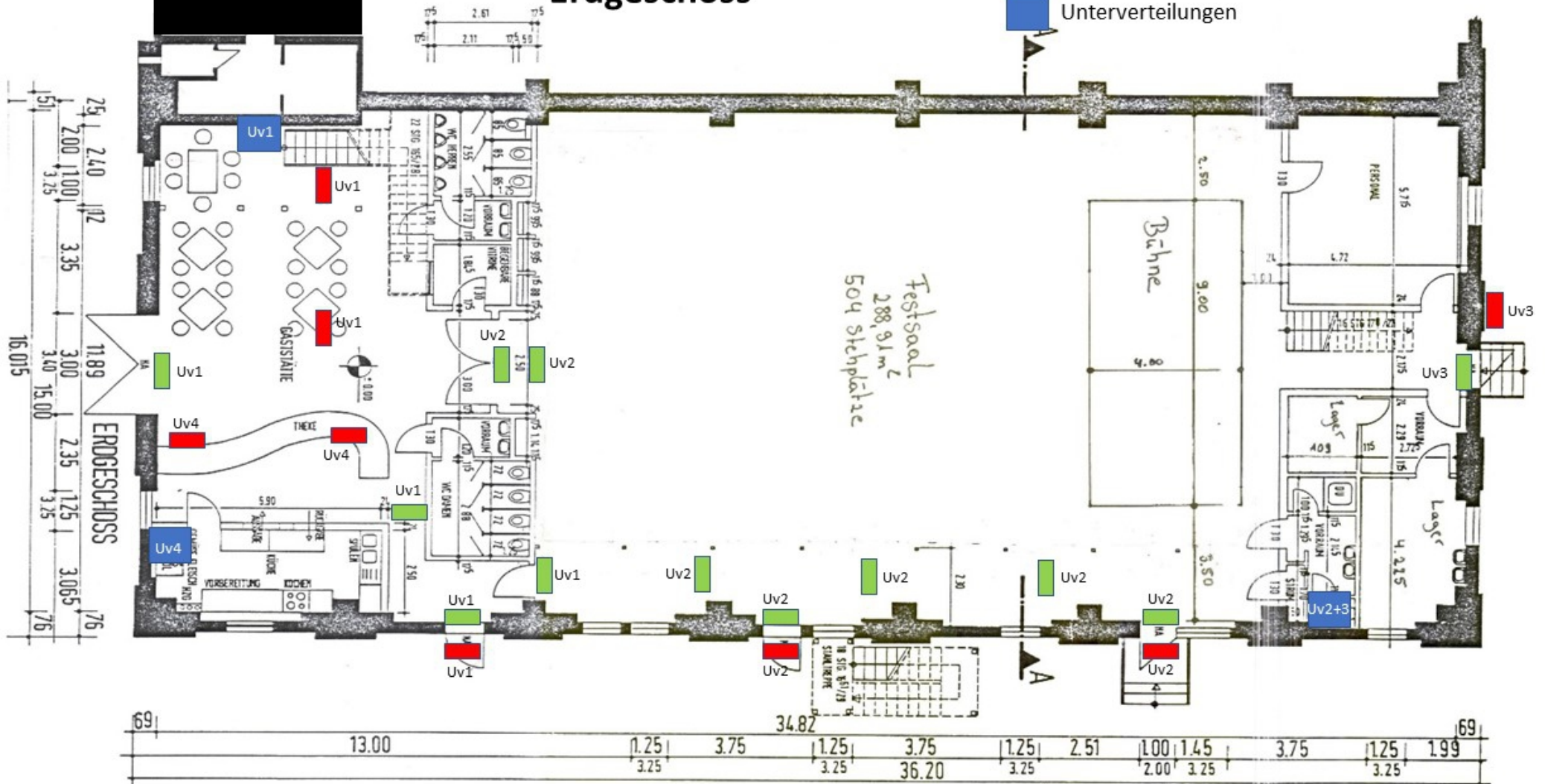
Deko-licht Untergeschoss





Fluchtweg und Notbeleuchtung Erdgeschoss

- Fluchtweghinweis: Dauerbetrieb und Stromausfall
- Notbeleuchtung: Nur bei Stromausfall
- Unterverteilungen

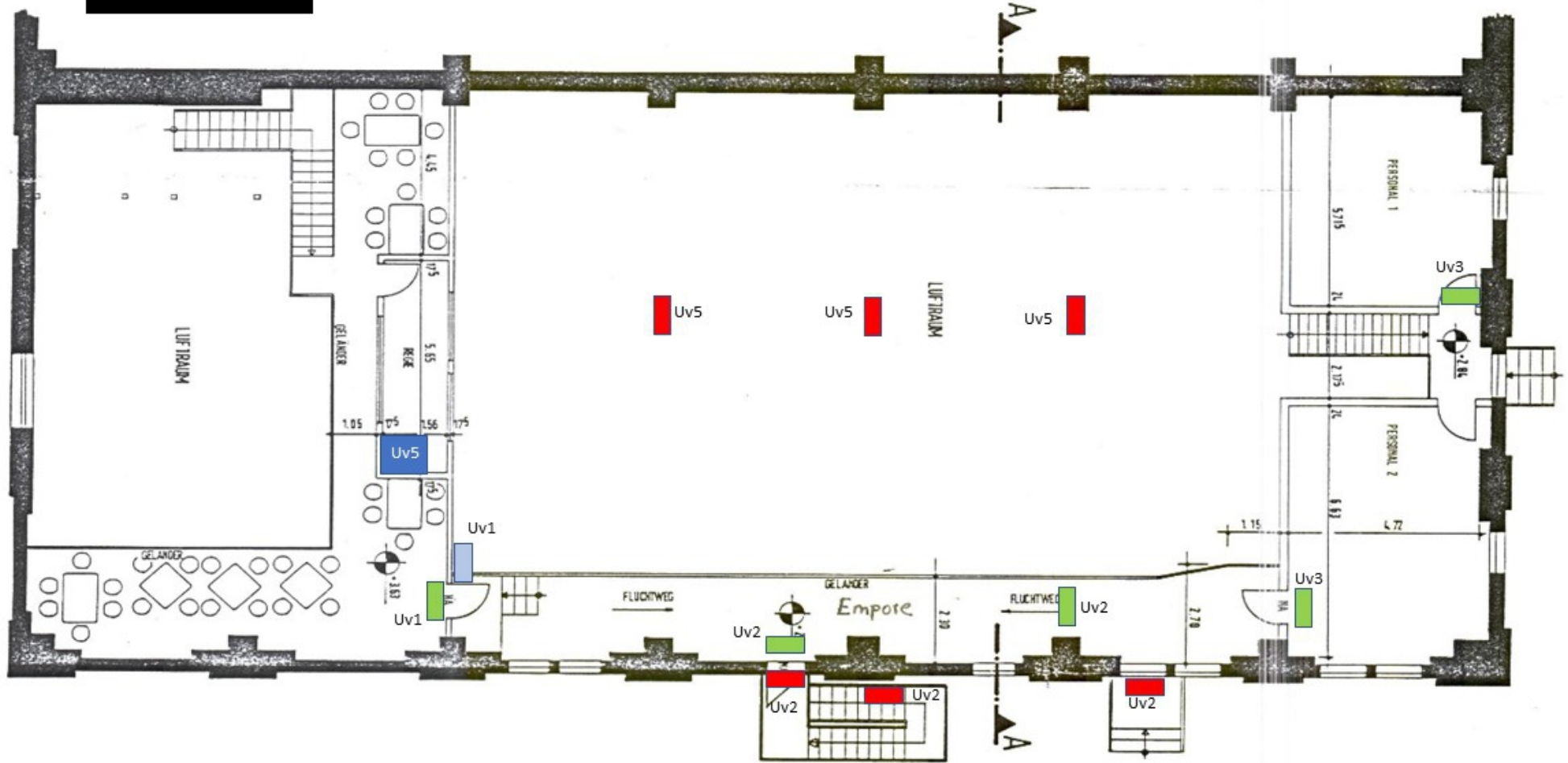




Fluchtweg und Notbeleuchtung Obergeschoss

- Fluchtweghinweis: Dauerbetrieb und Stromausfall
- Notbeleuchtung: Nur bei Stromausfall
- Treppenbeleuchtung: Dauerbetrieb und Stromausfall

OBERGESCHOSS



Beamer Stage: XM-Ökosystem WEMAX APPOTRONICS D30 L306ACF
4K, 12.500 ANSI Lumen, backpro (size: 4,5m x 2,5)

